

DEC 2023 / VOL 113 NO 12
US \$7 CAN \$9

LANDSCAPE ARCHITECTURE MAGAZINE

THE MAGAZINE OF THE AMERICAN
SOCIETY OF LANDSCAPE ARCHITECTS

BERGER PARTNERSHIP

A revitalized Riverfront Park
lifts Spokane, Washington

VERMONT FLOODS

Small towns and climate change

LANDSLIDE 2023

A legacy of landscapes saved

SKETCH STORY

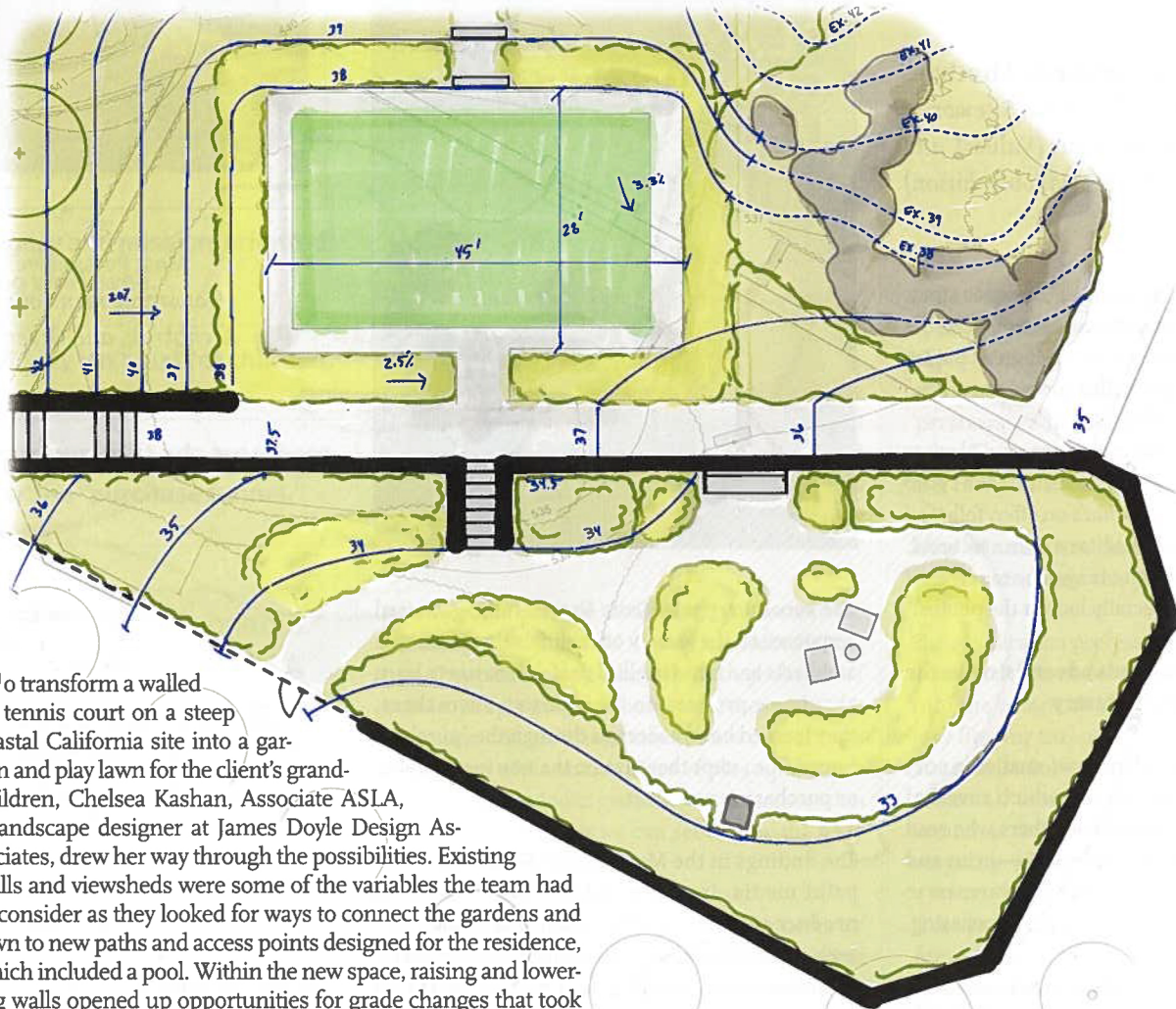
James Doyle Design Associates
serves up a place to play

2024
LAM
PRODUCT
DIRECTORY
INSIDE

SKETCHES HELP THE JAMES DOYLE DESIGN ASSOCIATES TEAM WORK THROUGH SOME TRICKY ANGLES.

“What we thought would start off as more of a limiting factor ended up, through iterating and just being loose and quick with our sketching, [allowing us to] get out a lot of different forms and shapes and think about all these access points in different ways. That was just such a strong part of our process and really got us to this point where we did end up removing some of the walls but maintaining the energy that we had from other versions that we had come up with.”

—CHELSEA KASHAN, ASSOCIATE ASLA



To transform a walled tennis court on a steep coastal California site into a garden and play lawn for the client's grandchildren, Chelsea Kashan, Associate ASLA, a landscape designer at James Doyle Design Associates, drew her way through the possibilities. Existing walls and viewsheds were some of the variables the team had to consider as they looked for ways to connect the gardens and lawn to new paths and access points designed for the residence, which included a pool. Within the new space, raising and lowering walls opened up opportunities for grade changes that took full advantage of the dramatic site. ●